



TM

GROUP



MOBILE RAMPS

OFFER 2024



TM

GROUP

Tel:

+48 600-260-128

+48 603-184-023

+48 502-866-383

E-mail:

[tmgroup.tomasz@gmail.com](mailto:tmgroup.tomasz@gmail.com)

[tmgroup.marcin@gmail.com](mailto:tmgroup.marcin@gmail.com)

[biuro@tm-group.info](mailto:biuro@tm-group.info)

Tel:

+48 600-260-128

+48 603-184-023

+48 502-866-383

E-mail:

[tmgroup.tomasz@gmail.com](mailto:tmgroup.tomasz@gmail.com)

[tmgroup.marcin@gmail.com](mailto:tmgroup.marcin@gmail.com)

[biuro@tm-group.info](mailto:biuro@tm-group.info)

## Our products:

### Company information

p.3

### Loading ramps standard

- Mobile loading ramp 8 tons 2 meters
- Mobile loading ramp 10 tons 2 meters
- Mobile loading ramp 15 tons 2 meters

p.5

p.7

p.9

### Loading ramps premium

- Mobile loading ramp PREMIUM 10 tons 2,5 meters
- Mobile loading ramp PREMIUM 15 tons 2,5 meters
- Mobile loading ramp PREMIUM 20 tons 2,5 meters
- Mobile loading ramp PREMIUM 25 tons 2,5 meters

p.11

p.13

p.15

p.17

### Dual-function ramp

- Mobile loading ramp PREMIUM - DUAL-FUNCTION RAMP

p.19





## About us

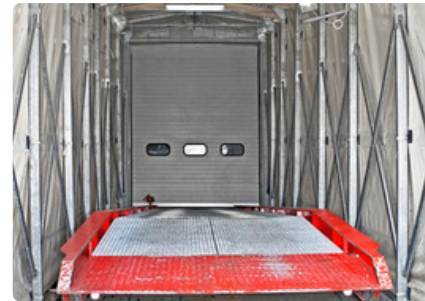
The company **TM-GROUP** has been operating in the market for several years. We specialize in the **production, sale, installation, and servicing** of workshop equipment. Our main goal is to offer each customer a solution that meets their individual needs. We aim to achieve this by delivering products and services at the **highest level** and providing **professional and comprehensive support**. The company tries to anticipate the behavior of the market and respond to the needs of customers to whom, in addition to competitive products, we offer **reliability, expertise and experience**.

## What we offer?

The main goal of our company is to offer each customer a solution that meets their individual needs. We strive to do this by providing products and services at the highest level and providing professional and comprehensive service.

In Our offer you will find: lifts, Mobile loading ramps, Pallet wrappers, Repair frames, Tool cabinets, many other accessories for the workshop and more. For details, please feel free to contact our sales department.

Due to the number of products we trade in the market Our prices are at competitive prices.



## Mobile loading ramp 8 tons 2 meters

- Maximum lifting capacity: **8 tons**
- Ramp width: **2000 cm**
- Ramp barriers on both sides
- Wheels used to move the ramp
- Central ramp handle allowing the ramp to be moved with a forklift truck
- Adjustment of the angle of inclination and height of the flap
- Ramp moving elements equipped with lubricators
- Ramp also equipped with a turnstile
- For an extra charge, the possibility of making any dimensions in the ramp - height adjustment with a motor (optional)
- ATTENTION: CHOOSE THE WIDTH OF THE DRAWBAR TO THE MINIMUM USAGE RECESS



### Description



★ **Ramp Railings:** A secure and safe surface. Both forklift and pedestrian traffic are guaranteed the best possible grip and stability of support.



★ **Forklift handle - can be installed on both sides:** Convenient and quick attachment for the forklift enables transportation of the ramp in all directions. Specially designed handle allows maneuvering the ramp even in limited space.



★ **Additional, adjustable safety supports:** Work safety is the basis, the ramp is equipped with a support system known from truck trailers. Solid legs provide guarantees of stable ground under the transported load. The movable drawbar allows you to level the ramp.



★ **Chain for connecting to a truck, wagon, or fixed warehouse ramp:** The solid steel chain is another advantage of our ramp, in addition, the safety feature excludes the possibility of the ramp moving during loading work.



★ **Solid side railings:** Detachable safety barrier with the option to install a frame/canopy (canopy is optional).



★ **Electric control of ramp height:** Smooth electro-hydraulic drive utilizes a high-quality pump. The pump requires 230V, so it can be operated from a standard socket.

## Mobile loading ramp 10 tons 2 meters

- Maximum lifting capacity: **10 tons**
- Ramp width: **2000 cm**
- Ramp barriers on both sides
- Wheels used to move the ramp
- Central ramp handle allowing the ramp to be moved with a forklift truck
- Adjustment of the angle of inclination and height of the flap
- Ramp moving elements equipped with lubricators
- Ramp also equipped with a turnstile
- For an extra charge, the possibility of making any dimensions in the ramp - height adjustment with a motor (optional)
- ATTENTION: CHOOSE THE WIDTH OF THE DRAWBAR TO THE MINIMUM USAGE RECESS



### Description



★ **Ramp Railings:** A secure and safe surface. Both forklift and pedestrian traffic are guaranteed the best possible grip and stability of support.



★ **Forklift handle - can be installed on both sides:** Convenient and quick attachment for the forklift enables transportation of the ramp in all directions. Specially designed handle allows maneuvering the ramp even in limited space.



★ **Additional, adjustable safety supports:** Work safety is the basis, the ramp is equipped with a support system known from truck trailers. Solid legs provide guarantees of stable ground under the transported load. The movable drawbar allows you to level the ramp.



★ **Chain for connecting to a truck, wagon, or fixed warehouse ramp:** The solid steel chain is another advantage of our ramp, in addition, the safety feature excludes the possibility of the ramp moving during loading work.



★ **Solid side railings:** Detachable safety barrier with the option to install a frame/canopy (canopy is optional).



★ **Electric control of ramp height:** Smooth electro-hydraulic drive utilizes a high-quality pump. The pump requires 230V, so it can be operated from a standard socket.

## Mobile loading ramp 15 tons 2 meters

- Maximum lifting capacity: **15 tons**
- Ramp width: **2000 cm**
- Ramp barriers on both sides
- Wheels used to move the ramp
- Central ramp handle allowing the ramp to be moved with a forklift truck
- Adjustment of the angle of inclination and height of the flap
- Ramp moving elements equipped with lubricators
- Ramp also equipped with a turnstile
- For an extra charge, the possibility of making any dimensions in the ramp - height adjustment with a motor (optional)
- ATTENTION: CHOOSE THE WIDTH OF THE DRAWBAR TO THE MINIMUM USAGE RECESS



### Description



★ **Ramp Railings:** A secure and safe surface. Both forklift and pedestrian traffic are guaranteed the best possible grip and stability of support.



★ **Forklift handle - can be installed on both sides:** Convenient and quick attachment for the forklift enables transportation of the ramp in all directions. Specially designed handle allows maneuvering the ramp even in limited space.



★ **Additional, adjustable safety supports:** Work safety is the basis, the ramp is equipped with a support system known from truck trailers. Solid legs provide guarantees of stable ground under the transported load. The movable drawbar allows you to level the ramp.



★ **Chain for connecting to a truck, wagon, or fixed warehouse ramp:** The solid steel chain is another advantage of our ramp, in addition, the safety feature excludes the possibility of the ramp moving during loading work.



★ **Solid side railings:** Detachable safety barrier with the option to install a frame/canopy (canopy is optional).



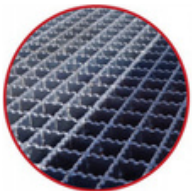
★ **Electric control of ramp height:** Smooth electro-hydraulic drive utilizes a high-quality pump. The pump requires 230V, so it can be operated from a standard socket.

# Mobile loading ramp PREMIUM 10 tons 2,5 meters

- Maximum lifting capacity: **10 tons**
- Internal width of the ramp: **2500 cm**
- Ramp barriers on both sides
- Ramp rollers which are used to move the ramp
- Central ramp handle that allows the ramp to be moved with a forklift truck
- Adjustment of the angle of inclination and flap height
- Ramp moving elements equipped with lubricators
- Ramp also equipped with a turnstile
- For an extra charge, the possibility of making any dimensions in the ramp  
Height adjustment with a motor (optional)
- ATTENTION: CHOOSE THE DRAWBAR WIDTH ACCORDING TO THE MINIMUM USAGE RECESS



## Description



★ **Ramp Railings:** Galvanized grating with anti-slip grooves. Provides a secure and safe surface. Both forklift and pedestrian traffic are ensured the best possible grip and stability. The grating features thick galvanization with the option of disassembly.



★ **Forklift handle - can be installed on both sides:** Convenient and quick attachment for the forklift enables transportation of the ramp in all directions. Specially designed handle allows maneuvering the ramp even in limited space.



★ **Chain for connecting to a truck, wagon, or fixed warehouse ramp:** The solid steel chain is another advantage of our ramp, in addition, the safety feature excludes the possibility of the ramp moving during loading work.



★ **Solid side railings:** Detachable safety barrier with the option to install a frame/canopy (canopy is optional).



★ **Electric control of ramp height:** Smooth electro-hydraulic drive utilizes a high-quality pump. The pump requires 230V, so it can be operated from a standard socket.



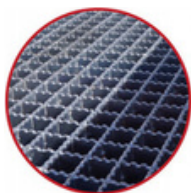
★ **Two-sided hand pump:** Hydraulic pump for height adjustment in case of inability to connect to electro-hydraulic power supply - dual-side lifting. This is an excellent solution ensuring operation in any conditions.

## Mobile loading ramp PREMIUM 15 tons 2,5 meters

- Maximum lifting capacity: **15 tons**
- Internal width of the ramp: **2500 cm**
- Ramp barriers on both sides
- Ramp rollers which are used to move the ramp
- Central ramp handle that allows the ramp to be moved with a forklift truck
- Adjustment of the angle of inclination and flap height
- Ramp moving elements equipped with lubricators
- Ramp also equipped with a turnstile
- For an extra charge, the possibility of making any dimensions in the ramp
- Height adjustment with a motor (optional)
- ATTENTION: CHOOSE THE DRAWBAR WIDTH ACCORDING TO THE MINIMUM USAGE RECESS



### Description



★ **Ramp Railings:** Galvanized grating with anti-slip grooves. Provides a secure and safe surface. Both forklift and pedestrian traffic are ensured the best possible grip and stability. The grating features thick galvanization with the option of disassembly.



★ **Forklift handle - can be installed on both sides:** Convenient and quick attachment for the forklift enables transportation of the ramp in all directions. Specially designed handle allows maneuvering the ramp even in limited space.



★ **Chain for connecting to a truck, wagon, or fixed warehouse ramp:** The solid steel chain is another advantage of our ramp, in addition, the safety feature excludes the possibility of the ramp moving during loading work.



★ **Solid side railings:** Detachable safety barrier with the option to install a frame/canopy (canopy is optional).



★ **Electric control of ramp height:** Smooth electro-hydraulic drive utilizes a high-quality pump. The pump requires 230V, so it can be operated from a standard socket.

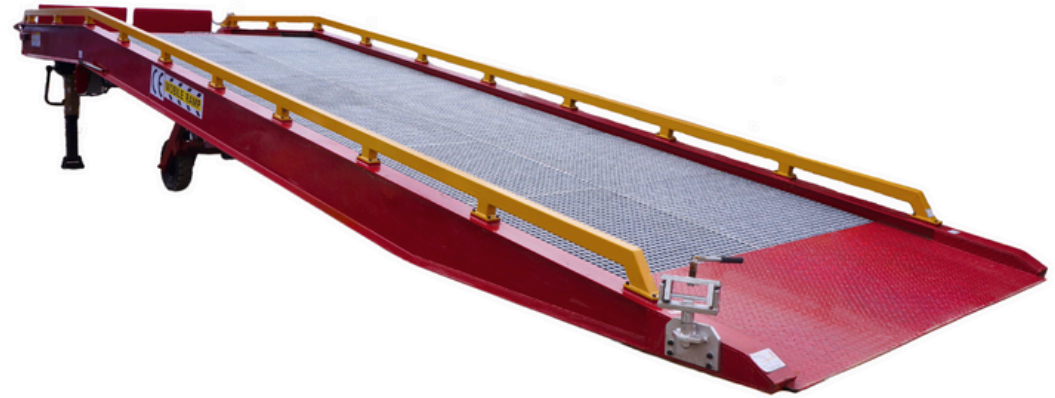


★ **Two-sided hand pump:** Hydraulic pump for height adjustment in case of inability to connect to electro-hydraulic power supply - dual-side lifting. This is an excellent solution ensuring operation in any conditions.

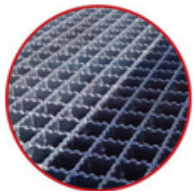


## Mobile loading ramp PREMIUM 20 tons 2,5 meters

- Maximum lifting capacity: **20 tons**
- Internal width of the ramp: **2500 cm**
- Ramp barriers on both sides
- Ramp rollers which are used to move the ramp
- Central ramp handle that allows the ramp to be moved with a forklift truck
- Adjustment of the angle of inclination and flap height
- Ramp moving elements equipped with lubricators
- Ramp also equipped with a turnstile
- For an extra charge, the possibility of making any dimensions in the ramp
- Height adjustment with a motor (optional)
- ATTENTION: CHOOSE THE DRAWBAR WIDTH ACCORDING TO THE MINIMUM USAGE RECESS



### Description



#### ★ Ramp Railings:

Galvanized grating with anti-slip grooves. Provides a secure and safe surface. Both forklift and pedestrian traffic are ensured the best possible grip and stability. The grating features thick galvanization with the option of disassembly.



#### ★ Forklift handle - can be installed on both sides:

Convenient and quick attachment for the forklift enables transportation of the ramp in all directions. Specially designed handle allows maneuvering the ramp even in limited space.



#### ★ Chain for connecting to a truck, wagon, or fixed warehouse ramp:

The solid steel chain is another advantage of our ramp, in addition, the safety feature excludes the possibility of the ramp moving during loading work.



★ **Solid side railings:** Detachable safety barrier with the option to install a frame/canopy (canopy is optional).



★ **Electric control of ramp height:** Smooth electro-hydraulic drive utilizes a high-quality pump. The pump requires 230V, so it can be operated from a standard socket.



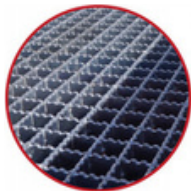
★ **Two-sided hand pump:** Hydraulic pump for height adjustment in case of inability to connect to electro-hydraulic power supply - dual-side lifting. This is an excellent solution ensuring operation in any conditions.

## Mobile loading ramp PREMIUM 25 tons 2,5 meters

- Maximum lifting capacity: **25 tons**
- Internal width of the ramp: **2500 cm**
- Ramp barriers on both sides
- Ramp rollers which are used to move the ramp
- Central ramp handle that allows the ramp to be moved with a forklift truck
- Adjustment of the angle of inclination and flap height
- Ramp moving elements equipped with lubricators
- Ramp also equipped with a turnstile
- For an extra charge, the possibility of making any dimensions in the ramp
- Height adjustment with a motor (optional)
- ATTENTION: CHOOSE THE DRAWBAR WIDTH ACCORDING TO THE MINIMUM USAGE RECESS



### Description



#### ★ Ramp Railings:

Galvanized grating with anti-slip grooves. Provides a secure and safe surface. Both forklift and pedestrian traffic are ensured the best possible grip and stability. The grating features thick galvanization with the option of disassembly.



#### ★ Forklift handle - can be installed on both sides:

Convenient and quick attachment for the forklift enables transportation of the ramp in all directions. Specially designed handle allows maneuvering the ramp even in limited space.



#### ★ Chain for connecting to a truck, wagon, or fixed warehouse ramp:

The solid steel chain is another advantage of our ramp, in addition, the safety feature excludes the possibility of the ramp moving during loading work.



★ **Solid side railings:** Detachable safety barrier with the option to install a frame/canopy (canopy is optional).



★ **Electric control of ramp height:** Smooth electro-hydraulic drive utilizes a high-quality pump. The pump requires 230V, so it can be operated from a standard socket.



★ **Two-sided hand pump:** Hydraulic pump for height adjustment in case of inability to connect to electro-hydraulic power supply - dual-side lifting. This is an excellent solution ensuring operation in any conditions.

## Mobile loading ramp PREMIUM - DUAL-FUNCTION RAMP

- Extendable ramp function by purchasing a tarpaulin.
- Detachable railings allow the ramp to be dual-functional.
- Ability to unload without exposure to weather conditions.
- Available in permanent or transparent color.



TM  
GROUP